

i-STAT Alinity v

Utilization Guide





Abaxis

VETERINARY USE ONLY



i-STAT Alinity v

The i-STAT Alinity v delivers blood gas, acid-base, electrolyte, chemistry, and hematology measurements in a completely portable, handheld package. Accuracy is ensured by extensive quality checks and calibrations that occur automatically with each cartridge run. Results are obtained in approximately three minutes—making it the ideal solution for critical care situations, anesthetic monitoring, and fieldwork.

Cartridge Storage:

Refrigerate at 2 °C to 8 °C (35 °F to 46 °F).

Cartridge Stability:

Cartridges may be stored at room temperature 18-30 °C (64-86 °F), but this will decrease the shelf life. Refer to the cartridge box for room storage shelf life information. Once a cartridge has been warmed to room temperature, do not return it to the refrigerator.

Allow the cartridge to warm for 5 minutes at room temperature before removing from the pouch for analysis.

Use cartridges immediately after opening pouch.

Sample Preparation and Considerations:

- Whole blood samples without anticoagulant or whole blood collected into a lithium heparin tube may be used.
- Blood may be either venous or arterial, depending on the analytes to be measured.
- Venipuncture is typically performed for acid-base, electrolyte, and hematologic studies.
- Samples for iCa should be collected in balanced heparin.
- For most accurate results, run samples immediately after collection.
 - Samples for pH, pCO₂, pO₂, TCO₂, and iCa should be tested within 10 minutes if stored anaerobically.
 - All other analytes should be tested within 30 minutes.

For additional information regarding individual cartridges and tests sample collection and handling, see Cartridge & Test Information sheets: www.pointofcare.abbott or www.abaxis.com/reference-center

Diagnostic Assistant: Start your diagnosis (Syd)

With Syd, simply enter clinical findings from the i-STAT Alinity v and/or i-STAT 1 to reveal a full printable report of patient disease concerns, fluid recommendations, and normal/abnormalities. Syd helps you to better treat and confirm disease concerns so your patient can be diagnosed more successfully with a better response to treatment.

Syd is available online at www.abaxis.com/syd

Acid-Base Utilization

Acid-base analysis is vital to your diagnostic protocols

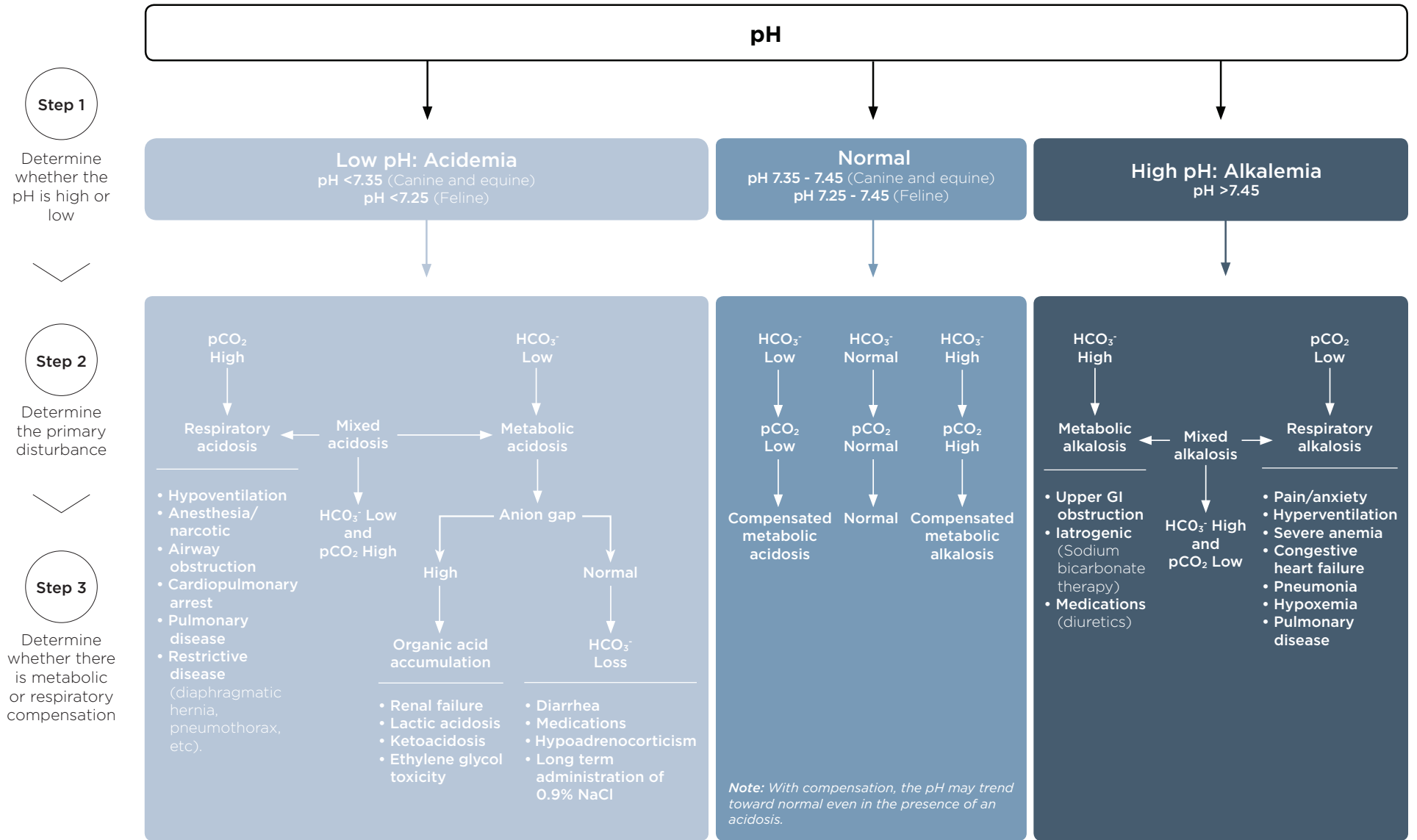
Chemical reactions, especially those occurring *in vivo*, are dependent on many factors, none more important than optimal pH. Illness, whether acute or chronic, often results in pH abnormalities. Failure to recognize and address these abnormalities may result in:

- Missed diagnoses
- Inappropriate treatment
- Delayed or poor patient response to therapy
- Increased time in hospital
- Frequent relapse
- Inability to thrive
- Patient death

Acid-base definitions	
pH	Measurement of the H ⁺ ion concentration
pCO₂	Partial pressure of the carbon dioxide; reflects the amount of carbonic acid present
HCO₃⁻	Bicarbonate, the body's major buffer
Anion Gap	Represents the concentration of all unmeasured anions in the plasma; the difference between measured cations and measured anions (Na ⁺ + K ⁺) - (Cl ⁻ + HCO ₃ ⁻); helpful in determining the cause of acid-base abnormalities.
Base Excess	mEq/L of strong base or acid needed to return the pH to 7.40.
Electrolytes	Na ⁺ , K ⁺ Cl ⁻
TCO₂	Total carbon dioxide, which is primarily HCO ₃ ⁻ (95%)
pO₂	Partial pressure of oxygen; measurement of the tension or pressure of oxygen dissolved in blood

Note: A venous sample is acceptable for interpretation of acid-base parameters. For detailed information on pO₂, an arterial sample is recommended.

Acid-Base Diagnostic Chart



Common Disease States Where Acid-Base Analysis Is Beneficial

EXPECTED ACID-BASE ABNORMALITIES (depending on species)					
ACIDEMIA				ALKALEMIA	
<p>pH < 7.35 (canine and equine) pH < 7.25 (feline)</p>				<p>pH > 7.45 (canine, feline, and equine)</p>	
<p>Metabolic acidosis ↑ H⁺ >>> ↓ pH (Most common presentation) ↓ HCO₃⁻ >>> ↓ pH (rare in small animals)</p>				<p>Metabolic alkalosis ↑ HCO₃⁻ or ↓ H⁺ >>> ↑ pH</p>	<p>Respiratory alkalosis ↓ O₂ >>> hyperventilation >>> ↓ pCO₂ >>> ↑ pH Reduced ability to uptake or exchange O₂</p>
LACTIC ACIDOSIS	VOMITING/DIARRHEA	RENAL FAILURE	DIABETIC KETOACIDOSIS	UPPER GI OBSTRUCTION	RESPIRATORY
<ul style="list-style-type: none"> An increase in lactic acid production as a result of decreased tissue perfusion and/or decreased oxygenation Occurs in many disease states, most commonly: <ul style="list-style-type: none"> Hypovolemia/shock Vomiting/diarrhea Colic Gastric torsion (GDV) 	<ul style="list-style-type: none"> Lactic acidosis secondary to hypovolemia +/- loss of sodium bicarbonate (NaHCO₃) Electrolyte abnormalities Anion gap often normal 	<ul style="list-style-type: none"> Uremic toxins increase acid levels Loss of sodium bicarbonate (NaHCO₃) OR hydrogen ion retention (H⁺) Electrolyte abnormalities Lactic acidosis with anemia and/or severe dehydration 	<ul style="list-style-type: none"> Ketoacids Lactic acidosis Electrolyte abnormalities High/normal anion gap, depending on severity 	<ul style="list-style-type: none"> Loss of Cl⁻ in the form of HCl (hydrochloric acid) Hypochloremia is common Potential loss of free body water 	<ul style="list-style-type: none"> Hyperventilation Pain Iatrogenic (mechanical ventilation) Decreased tissue perfusion (due to anemia, dehydration, other) Compensation for metabolic acidosis (hyperventilation) Head trauma
CARTRIDGE CHOICES					
<p>CG4+: Acid-base, lactate, pO₂, TCO₂ Helpful with GDV and other severe GI cases Diagnosis and monitoring for emergencies and/or severe cases</p>		<p>CG8+: Acid-base, pO₂, HCT, glucose, Na, K, iCa Helpful for monitoring diabetic and chronic kidney disease patients Diagnosis and monitoring for emergencies and/or severe cases Neoplasia diagnosis</p>		<p>EC8+: Acid-base, HCT, electrolytes (best if high anion gap expected) Helpful in monitoring renal failure patients and GI disease</p>	
<p><i>Disclaimer: Cartridge examples are suggestions for diagnostics. Overall diagnosis should be based on medical history, physical examination and the patient's response to treatment.</i></p>					

i-STAT Alinity v Cartridge Test Menu

The i-STAT Alinity v uses a wide range of disposable, single-use cartridges that contain the necessary reagents to provide reference lab quality results, while improving efficiency throughout the animal health continuum of care.

		CG4+	CG8+	G	Crea	6+	CHEM8+	EC8+
Hematology	Hematocrit (Hct)		•			•	•	•
	Hemoglobin (Hb)*		•			•	•	•
Chemistry	Blood Urea Nitrogen (BUN)					•	•	•
	Creatinine (Crea)				•		•	
	Ionized Calcium (iCa)		•				•	
	Glucose (Glu)		•	•		•	•	•
Electrolytes	Chloride (Cl)					•	•	•
	Sodium (Na)		•			•	•	•
	Potassium (K)		•			•	•	•
Acid Base	pH	•	•					•
	Partial Pressure of Carbon Dioxide (<i>PCO</i> ₂)	•	•					•
	Bicarbonate (HCO ₃)*	•	•					•
	Total Carbon Dioxide (TCO ₂)*	•	•				•	•
	Anion Gap (AnGap)*						•	•
	Base Excess (BE)*	•	•					•
Blood Gas	Partial Pressure of Oxygen (<i>PO</i> ₂)	•	•					
	Oxygen Saturation (sO ₂)*	•	•					
Specialty	Lactate (Lac)	•						

*Calculated Value

i-STAT Alinity v System and Reference Ranges

		Units	System Range	Reference Range		
				Canine	Feline	Equine
Hematology	Hematocrit (Hct)	% PCV	15 - 75	35 - 50	24 - 40	30 - 45
	Hemoglobin (Hb)*	g/dL	5.1 - 25.5	12.0 - 17.0	8.0 - 13.0	10.0 - 15.0
Chemistry	Blood Urea Nitrogen (BUN)	mg/dL	3 - 140	10 - 26	15 - 34	11 - 27
	Creatinine (Crea)	mg/dL	0.2 - 20.0	0.5 - 1.3	1.0 - 2.2	0.4 - 2.2
	Ionized Calcium (iCa)	mmol/L	0.25 - 2.50	1.12 - 1.40	1.20 - 1.32	1.25 - 1.75
	Glucose (Glu)	mg/dL	20 - 700	60 - 115	60 - 130	62 - 134
Electrolytes	Chloride (Cl)	mmol/L	65 - 140	106 - 127	112 - 129	100 - 111
	Sodium (Na)	mmol/L	100 - 180	139 - 150	147 - 162	128 - 142
	Potassium (K)	mmol/L	2.0 - 9.0	3.4 - 4.9	2.9 - 4.2	1.9 - 4.1
Acid-Base	pH		6.5 - 8.2	7.35 - 7.45	7.25 - 7.40	7.35 - 7.45
	Partial Pressure of Carbon Dioxide (PCO_2)	mmHg	5 - 130	35.0 - 38.0	33.0 - 51.0	36.0 - 46.0
	Bicarbonate (HCO_3^-)*	mmol/L	1.0 - 85.0	15.0 - 23.0	13.0 - 25.0	25.0 - 30.0
	Total Carbon Dioxide (TCO_2)*	mmol/L	5 - 50	17 - 25	16 - 25	24 - 32
	Anion Gap (AnGap)*	mmol/L	(-10) - (+99)	8 - 25	10 - 27	5 - 15
	Base Excess (BE)*	mmol/L	(-30) - (+30)	(-5) - 0	(-5) - (+2)	(-5) - (+5)
Blood Gas	Partial Pressure of Oxygen (PO_2)	mmHg	5 - 800	85 - 100	90 - 110	90 - 110
	Oxygen Saturation (sO_2)*	%	0 - 100	>90	>90	>90
Specialty	Lactate (Lac)	mmol/L	0.30 - 20.00	0.6 - 2.9	0.5 - 2.7	0.3 - 1.5

*Calculated Value

Highlighted cells reflect ranges for arterial samples. No venous reference ranges are yet available.

These normal intervals are provided only as a guideline. The most definitive reference intervals are those established for your patient population. Test results should be interpreted in conjunction with the patient's clinical signs.



Abaxis, Inc.

3240 Whipple Road
Union City, CA 94587 USA
Tel +1 800 822 2947
Fax +1 510 441 6150

 www.abaxis.com

ABAXIS Europe GmbH

Bunsenstr. 9-11
64347 Griesheim Germany
Tel +49 6155 780 21 0
Fax +49 6155 780 21 111