

# Introducing the **piccolo** *xpress*<sup>™</sup> chemistry analyzer

Fast, easy, accurate on-site chemistry testing



## Exceptionally Fast

From sample to complete panel results in approximately 12 minutes

**Simple as 1-2-3**

- 1. Add sample**
- 2. Insert disc**
- 3. Read results**

## Exceptionally Easy

Fully automated system requires no special operating skills

- 0.1cc whole blood, serum or plasma
- Delivers multi-analyte panels including CLIA-waived lipids, liver enzymes and glucose monitoring
- Self calibrates with every test run
- Built-in iQC<sup>™</sup> eliminates daily liquid control testing
- Walk-away operation
- Full-color touch screen with intuitive user interface
- Results are provided in a “hard copy” self-adhesive report or can be quickly transferred to a data management system, enabling physicians to rapidly obtain critical diagnostic information at the point-of-care



Step 1: Add sample



Step 2: Insert disc



Step 3: Read results

## Exceptionally Accurate

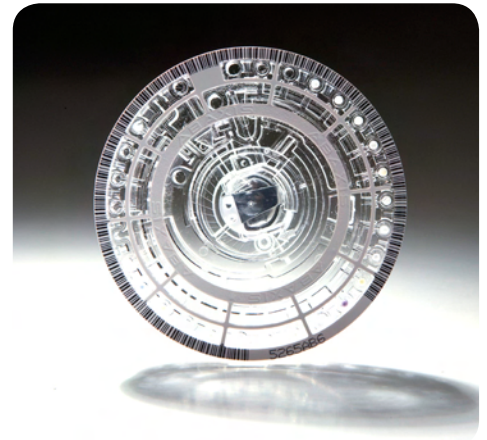
Advanced technology ensures sound results

- Centrifugal and capillary forces mix and dilute the reagents and sample in a self-contained, disposable reagent disc — lessening opportunities for procedural errors
- Accuracy and precision comparable to larger, more expensive laboratory analyzers
- Built-in intelligent quality control (iQC<sup>™</sup>) meets CLIA and NCCLS guidelines
- iQC<sup>™</sup> system performs continuous quality control checks on every run
- Every self-contained reagent disc is barcoded for automatic self-calibration





**Piccolo xpress™**  
Product Specification



Reagent Disc

<b>Dimensions</b>	Height 32.4 cm (12.75 in) Width 15.2 cm (6 in) Depth 20.3 cm (8 in)
<b>Weight</b>	Analyzer            5.1 kg (11.2 lbs) Power Adapter    0.7 kg (1.6 lbs)
<b>Power Requirements</b>	100-240 volts AC; 50-60 Hz; or 15 volts DC, 5.0A
<b>Sample Size</b>	0.1cc (100 µl)
<b>Sample Type</b>	Lithium heparin, whole blood, serum or plasma
<b>Test Time</b>	Approximately 12 minutes
<b>Quality Control Features</b>	Built-in intelligent Quality Control (iQCTM) system
<b>Communication</b>	Bi-directional input/output
<b>Consumables</b>	8-cm diameter, single-use, self-contained plastic chemistry reagent discs. Each disc contains all reagents needed to perform a panel of tests on a single sample
<b>Data Input Display</b>	10-digit numeric –VGA color touchscreen
<b>Printer</b>	Built in thermal printer with adhesive backed paper External Printer/LIS/EMR capable
<b>Memory Capacity</b>	Up to 5000 patient and quality control results
<b>Mode of Operation</b>	Continuous
<b>Protection Against Ingress of Fluids</b>	Ordinary equipment (IPXO)
<b>Analyzer Software</b>	Comprised of two matched programs; one processes the information and controls the measurement engine itself, the other reports analyte concentrations Stores data related to each run (time, date, user ID, patient results, control data) Results can be uploaded to a computer using USB Ports
<b>Analyzer Hardware</b>	Xenon arc stroboscopic lamp and a beam-splitter/detector read nine wavelengths 16-bit analog-to-digital converter used in signal processing Two microprocessors control analyzer functions Heater maintains disc at 37 ± 1° C during reaction portion of analysis
<b>Ambient Operating Temperature Range</b>	15-32° C (59-90° F)
<b>Reaction Temperature</b>	37° C (98.6° F)
<b>Operating Humidity</b>	0-80%, noncondensing
<b>Thermal Protection Rating</b>	70° C (158°F)